

Geo Message

News and events for the geospatial community
November/December 2023

Please note that our offices will be closed from Friday 15th December and returning on Monday 8th January 2024.

We wish you all a safe and happy holiday season!

Board Leadership Changes

Following the recent AGM and Board Meeting, we are pleased to announce the following changes to the GCA Board.

- Kate Lundy has been appointed as Chair/President
- The Directorships of Paul Digney and Jacinta Burns have been extended for 12-months
- Mary-Ellen Feeney as been elected as a Member Director

With these updates, the GCA Board is now complete, comprising individuals with diverse skills and experiences to guide the organisation strategically. The current skills-based Board is as follows:

I'm honoured to take on the role of Board Chair/President at GCA. Our vision is to build on our strong foundations: serving members and the nation through creativity, innovation, collaboration, growth, recognition, and inclusivity.

Kate Lundy, Chair/President at Geospatial Council of Australia:



Kate Lundy
Chair/President



Alistair Byrom
Deputy Chair



Paul Digney



Roshni Sharma



Jacinta Burns



Kate Ramsay



Darren Mottolini



Mary-Ellen Feeney



Stewart Dunne
(starting 1 February 2024)



Kris Trott
Company Secretary

To learn more about the Board Members, click [HERE](#).



Claire Gerber appointed as National Events Manager

In her previous roles, Claire has successfully orchestrated a wide array of events, including galas, networking functions, seminars, industry awards programs, conferences, and brand activations, both nationally and internationally.

Commenting on her new role, Claire said, "I am excited to join the Geospatial Council of Australia and have the opportunity to enhance the events program for our members. My goal is to create meaningful and engaging experiences that bring our community together."

We are pleased to announce the appointment of Claire Gerber as National Events Manager. Based in Perth, Claire brings over 15 years of extensive experience in event management, most recently serving as the National Events Manager for the National Electrical and Communications Association (NECA).

Her role will involve the strategic development and implementation of initiatives, and partnerships, ensuring that events are tailored to meet the needs and interests of GCA members, and the wider geospatial community.

To find out more about Claire, click [HERE](#).

Student Membership Transition

For all our Student Members, finishing up their studies this year, we are committed to supporting you in your career journey.

If you would like to convert to Financial Membership, we have a First Year Graduate Membership Level available at a reduced fee. This is targeted for those who have completed

their Bachelor's Degree and are currently in their first year of work. We genuinely hope you'll consider continuing your journey with us. Your involvement contributes to the growth and strength of our geospatial community.

For more information, click [HERE](#).





ISAQ Bicentennial Education Foundation

Have you heard about the ISAQ Bicentennial Education Foundation? It's mission is to nurture and cultivate the next generation of spatial professionals through scholarship programs, providing the industry with qualified and skilled people whilst facilitating the necessary research and knowledge for future innovation. Learn more [HERE](#).

Workforce Update



Professional Certifications ESP-AP Certification

A meeting of the newly formed ESP-AP Certification Committee took place marking the commencement of ongoing endeavours to enhance the Certifications and align it with the evolving needs of the industry. As part of the continuous improvement of the Certification, the Committee will seek feedback from industry and will keep the industry informed about the latest developments.

Retaining ESP-AP Certification

A reminder to all our ESP-AP Certification holders – if you wish to retain your certification, you are required to pay the relevant fee and submit CPD records by the end of the financial year (30 June 2024). You need to have obtained a minimum of 15 CPD points, with five of those relating to engineering surveying to comply with the Policy.

Once this has been completed, the ESP-AP Certification holder will retain their Certification for another financial year (1st July - 30th June) and their name will remain on the ESP-AP Register on the GCA website.

ESP-AP Certification Assessors needed

If you have an existing ESP-AP Certification and would like to join the panel of Assessors, please contact us: certification@geospatialcouncil.org.au

GISP-AP Certification

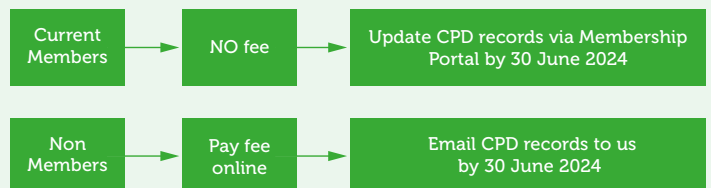
GCA is in discussions with the GIS Certification Institute regarding collaboration to re-introduce the GISP Certification latest version.

Watch this space for more information.

Important information:

Current Members: No fee is required, however you must update your CPD records via the Membership Portal by 30th June 2024.

Non-Members: Please pay your fee via the online Shop on our website and email your CPD records to: certification@geospatialcouncil.org.au by 30th June 2024



Universities

University Gap Identification Survey for Industry and Government Organisations

GCA is pleased to be collaborating with nine Australian Universities to better understand the needs of industry, and to deepen the engagement between universities and industry to develop talent. Our objective is to conduct a survey to identify gaps in academic curricula, focusing on enhancing the connection between students, industry, and universities. This will support academic institutions align their educational programs (be it undergraduate, post-graduate, or short courses such as micro-credential programs) with the changing needs of industry, students, and governments.

The nine Universities taking part include:

- Curtin University
- Flinders University
- Monash University
- RMIT University
- University of Melbourne
- University of Newcastle
- UNSW
- UniSQ
- University of Tasmania

The next meeting will take place early next year.

University of Southern Queensland to fill surveying skills gap

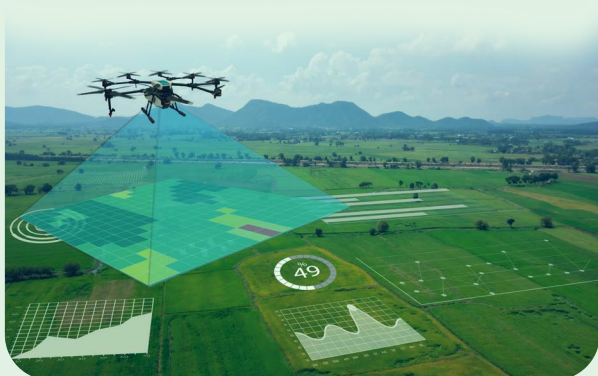
The University of Southern Queensland (UniSQ) is pleased to be offering two new microcredential courses from January 2024, which will tackle chronic skills shortages in the urban planning and surveying industry, among others.

The microcredential courses include:

Drone Mapping and Navigation Systems

This course offers shorter and more accessible forms of learning to provide required skills for you to be part of a much-needed workforce in surveying, engineering, agricultural research and more.

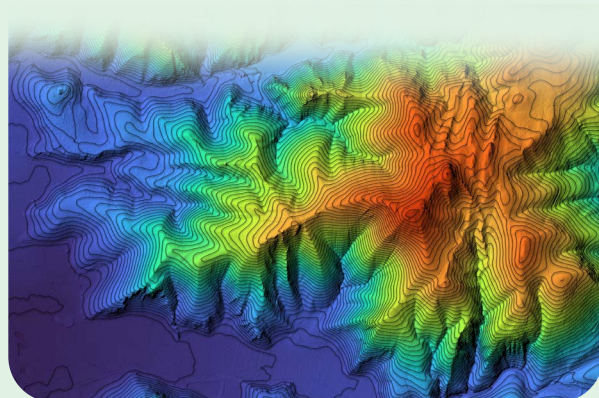
Find out more [HERE](#).



Geographic Information Systems (GIS) for Professionals

This course offers transferable skills for four of the Top 20 occupations in demand: surveyors, software and applications programmers, ICT business and systems analysts, and civil engineering professionals.

Find out more [HERE](#).



Vocational Education & Training

To support the development of industry relevant vocational qualifications, GCA has established connections and started discussions representing the geospatial sector with three Job Skills Councils:

Build Skills: covers industries that provide property services, small or large-scale construction services, traditional building as well as large scale civil infrastructure services and water infrastructure operations. Learn more [HERE](#).

Future Skills Organisation: covers professional services and supports the needs of businesses and the community in specialty areas including digital skills and emerging industries. Learn more [HERE](#)

Mining and Automotive Skills Alliance: covers industries involved in mineral exploration and extraction operations, and automotive. Learn more [HERE](#).

Jobs Skills Councils (JSCs) are a Commonwealth Government initiative comprising a network of organisations established to bring together employers,

unions, educators and industry leaders to identify the skills needed for industries and to develop strategies to meet those needs. JSCs focus on 4 core functions:

1. Workforce Planning
2. Training Product Development
3. Implementation, Promotion and Monitoring
4. Industry Stewardship

Learn more [HERE](#).



Young & Emerging Professionals Mentoring Program 2024

GCA's Mentoring Program is a dynamic initiative aimed at providing crucial support and guidance to emerging professionals within the geospatial industry, helping them realise their career aspirations and enhance their skills and knowledge. This program presents a unique opportunity for mentees to connect with experienced mentors who offer valuable insights and advice. Open to professionals of all levels and backgrounds across the surveying and spatial sciences, this mentoring program welcomes both mentors and mentees. The 2024 Mentoring Program will commence in April/ May. For more information, contact: mentoring@geospatialcouncil.org.au

We thank the 2023 YEP Mentoring Program Working Group for their incredible leadership and support to deliver this program.

- Mingzhe Li
- Ben Gan
- Sara Faizan
- Henrique Reis
- Nick Bollard

We are looking for dynamic people to volunteer to be part of the YEP Mentoring Program Working Group for 2024 to help deliver the program. If you would like to get involved, please get in touch.



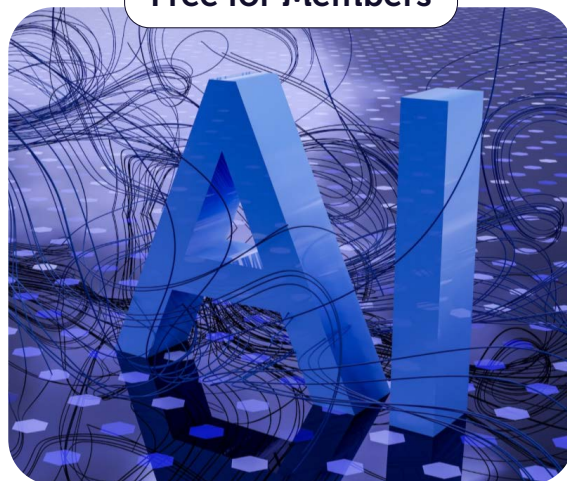
Upcoming Events

Webinar: An introduction to AI in smart infrastructure

The advent of AI has ushered in an era of disruption, captivating the geospatial community. We've observed its impact across various applications, ranging from text generation to image segmentation, with tools like GeoChatGPT, GeoAI, and advanced cartography techniques emerging. Join us for this webinar where our guest speaker, Dr Bin Liang, Senior Lecturer in Data Science at the University of Technology Sydney, will provide an introduction to the use of AI in smart infrastructure and the geospatial profession.

You can register [HERE](#).

Free for Members



Summer Seminar

GCA is pleased to advise that the Summer Surveying Seminar returns to Melbourne on Friday 2 February 2024 – proudly supported by C.R. Kennedy in Port Melbourne. So please save the date to hear insights from industry experts and take advantage of CPD points. Registration will open soon, keep an eye on your inbox

Date: 2 February 2024

Location: Melbourne

International Women's Day Breakfast

Join us for a 'Women in Geospatial Breakfast' on International Women's Day, where we will hear from inspiring female industry leaders. We will then open the floor for discussion around crucial change needed to attract and retain women in the geospatial sector. Save the date for this not to be missed annual event!

Date: 8 March 2024

Location: NSW, QLD, VIC

Time: 7:30am – 9:30pm

WA Digital Twin Symposium

We are pleased to announce we will be holding our special symposium to discuss spatial digital twins in Perth. This will be a fantastic opportunity to explore this important and relevant topic for all geospatial professionals. Our local team is putting together a great program for the event. If you have an experience, project or research you would like to share on the topic, a call for abstracts will be open soon.

Date: 8 March 2024

Venue: Novotel Perth Langley

Time: 9:00am – 6:00pm (AWST)

Industry Events

IGNSS 2024

The IGNSS Association runs the bi-annual IGNSS conference, which is the premier conference on Global Navigation Satellite Systems (GNSS) and related Position, Navigation and Timing (PNT) technologies in the Australasian region.

Date: 7-9 February 2024

Venue: Colombo Theatres, UNSW Sydney

Register: [HERE](#)

A graphic for the IGNSS 2024 conference. The text "IGNSS 2024" is displayed in a large, white, stylized font against a dark blue background. Below the text is a glowing, golden, abstract shape resembling a map of Australia or a satellite constellation, set against a starry space background.

Date: 22 February and 23 February 2024
Location: Fairmont Resort Blue Mountains
Time: 9:00am – 5:00pm
Register: [HERE](#)

ISNSW Annual Conference 2024

The highly anticipated ISNSW Annual Conference 2024 has been confirmed! Presented as a hybrid event, attendees will have the choice to join online or in person. Open to ISNSW members and non-members, the ISNSW Annual Conference offers an unrivalled experience for all.



ISNSW Cadastral Workshops

Learn from the industry's best

These workshops are presented by the top professionals in the surveying industry.

Attend the ISNSW Cadastral Workshops to ensure you are well equipped for the BOSSI exams.

We'll cover Ethics, Railway Boundaries, Strata & Community Title, Rural and Urban competencies.

Day 1, 2 & 3

Instructional Workshop
 19, 20, 21 January 2024

Day 4

Land XML Workshop
 3 February 2024

Day 5

Pre - Assessment Workshop
 10 February 2024



Q&A

MEET THE MEMBERS



Laren Collen

**Survey Industry Lead, Hexagon;
and GCA's WA Chair**

How and why did you join the GCA?

I joined GCA in 2021 after attending several events over the past decade. The reason I joined was to contribute to the growth and extension of the profile of our industry. Very few people outside of

work know what we do and why. If we could shine more of a light on the industry and raise the awareness, then I wanted to be onboard with this.

Where did your interest in geospatial technologies come from?

I grew up in a country town in South Africa and had a passion for geography at school. This combined with having a surveyor as an uncle led me to explore the profession, and I never looked back when I discovered it!

What role do geospatial technologies play in your working life?

Geospatial technologies have underpinned all facets of my working career to date, having worked as a surveyor for many years I still think as a surveyor and value maps, location, proximity and planning at all times. Google Maps is my favourite website!

What are the key benefits that you believe geospatial technologies bring to Australian business and society?

With such a large and dispersed country, having a good grasp of location and distance is critical in all industries. Those that understand geospatial principles can leverage the value it provides to add value to their work, and those that don't could struggle to generate efficiencies to remain competitive. All the largest businesses in banking, mining, FMCG, insurance, and property rely on geospatial technology for many of their critical business decisions. On a consumer level, where would we all be without the maps provided in car navigation, directions to local shops, rideshare platforms etc.

How does the GCA help its members to innovate and succeed?

GCA's greatest strength is that it helps to connect people from all corners of the geospatial and surveying industry. With this cross pollination comes a wonderful transfer of ideas, collaboration initiatives and knowledge sharing. This helps to drive innovation which in turn adds value to all involved.

How important are geospatial technologies – and the work of the GCA – in the fight against climate change?

I believe the work we do is such a great lens to understand and identify the impact of "unsustainable" business practices that impact our environment. Changing these to better practices in most cases makes good economic sense as well. For example, using smarter routing tech allows for vehicles to have shorter routes and thus cut fuel and save money. A win-win for the environment and business. GCA helps to shine the light on the positive impact geospatial companies have on the industries in which they operate.

What does the future of geospatial hold?

Efficiency gains through automation – Australia like many countries struggle with a workforce shortage. To overcome this, everyone is searching and working towards making the hours they work count for more and to increase their productivity. This is not isolated to the geospatial industry, but we will certainly see the effects of these improvements add value to our work. Our tools, solutions and software will become more sophisticated and require less user input to generate useable outcomes.



What are some significant milestones in your career related to geospatial technologies?

Some key milestones that stand out when I reflect on the past 20 years are: immigrating to Australia to build a career in my early 20's; being fortunate to travel for work throughout WA, NSW & VIC over the years; working on many of the largest projects in our beautiful country; and probably the most important aspect is being privileged to have met many of the great people of our industry – recently I was able to meet Peter Byrne who is an incredible contributor to the geospatial industry in WA and just a fantastic person as well!

What do you do outside of your work in the industry (family, hobbies, interests, sports, pets etc)

I have a wonderful wife and two young kids that keep me on my toes outside of work. I also thoroughly enjoy working with my hands with either gardening or our ongoing renovation projects at home. Like many South Africans I am also a devoted rugby supporter and get involved with our local church where I can.



The Geospatial Council of Australia is very keen to gather feedback on GeoMessage and the value it delivers to our Members. Please let us know what you would like to see in our next edition by emailing any feedback or comments to comms@geospatialcouncil.org.au