

# Geo Message

News and events for the geospatial community

July 2024

## REGIONAL CONFERENCE SERIES

We are looking forward to bringing the 2024 Geospatial Regional Conference series to you over the next four months.

These Conferences offer a dynamic platform to dive deep into the latest technologies, trends, and best practices shaping our industry. From experts in surveying, GIS, remote sensing, hydrography, geospatial analysis, or cartography, these events are your opportunity to gain invaluable insights, forge strategic partnerships, and unlock new avenues for growth and innovation. Whether you're seeking to expand your skill set, explore new technologies, or simply connect with like-minded professionals, our conferences are your gateway to success in the ever-evolving world of geospatial technology.



## Victoria – Friday, 9 August

6 x GCA  
CPD  
points

### Registration closes this Friday, 2 August

The program for our **2024 Victorian Geospatial Conference**, is now available!

Don't miss the panel session on 'Generative AI and its Impact on Industry', or the keynote 'Earth Observation Data and

Urban Feature Mapping using Intelligent Methods' by Prof Jagannath Aryal from the University of Melbourne

Make sure you stay on for the 'Night of Nights' on the Victorian Geospatial calendar - the 2024 Victorian Geospatial Excellence Awards! This year we're raising the bar and putting on a spectacular dinner at River's Edge Events, directly across the river from the Convention Centre. This is a night dedicated to celebrating the achievements and innovations within the geospatial industry in Victoria.

**Registrations close FRIDAY, 2 August. Register [HERE](#).**

## South Australia – Friday, 16 August

### Two weeks left to register.

Discover the boundless horizons of geospatial information at our highly anticipated Spatial Information Day! With a Keynote from Michael Milford, Director at QUT Centre for Robotics and ARC Laureate Fellow, along with a panel featuring Surveyor-Generals from South Australia, Tasmania, ACT, and Northern Territory - this is a not to be missed event.

Make sure you stay on and join us for the **2024 South Australian Geospatial Excellence Awards**. This is the industry's premier platform to celebrate the achievements of top geospatial organisations and individuals, showcasing the finest projects and most significant performance of professionals the industry has to offer. Be there to celebrate the excellence in the geospatial industry, network, and congratulate the winners!

**Remember to register by Friday, 9 August.**

### Sponsorship opportunities are still available for SID.

If you wish to enhance your brand presence and make an impact at the Spatial Information Day, please [CLICK HERE](#) to download the sponsorship prospectus which provides full details on the options that are available.

For any further information about opportunities at the Spatial Information Day please contact Claire Gerber, National Partnerships Manager:

[claire.gerber@geospatialcouncil.org.au](mailto:claire.gerber@geospatialcouncil.org.au)



## NSW – Friday, 30 August

### Celebrate success!

Although there won't be a regional conference in NSW this year due to Locate24, make sure you get to the **2024 NSW Geospatial Excellence Awards** at LAqua at Cockle Bay.

This prestigious event recognises individuals, teams, and organisations that have made significant contributions to the field of geospatial technology and applications. The awards highlight excellence in various categories, including research, project implementation, and technological advancements, showcasing the best and brightest in the industry.

**Book your ticket [HERE](#) today!**

## Queensland – Thursday, 5 September

### Call for abstracts close Friday, 2 August

Don't miss the chance to connect and share your stories with fellow geospatial experts and enthusiasts alike. Submit your abstract for the **2024 Queensland Geospatial Conference and Excellence Awards**.

Whether you're a seasoned professional, an academic researcher, or a passionate enthusiast, this event is your platform to share innovative ideas, cutting-edge research, and practical applications in the realm of geospatial



information. Whether it's surveying, GIS, remote sensing, hydrographic surveying, geospatial analysis, or cartography, we welcome submissions from all domains.

**Upload your abstract [HERE](#) by Friday, 2 August!**

## Tasmania – Friday, 20 September

### Only two weeks left to submit your abstract!

Regardless of whether you're an experienced professional, an academic researcher, or a passionate hobbyist, the **2024 Tasmanian Geospatial Conference and Excellence Awards** offers a platform to present innovative ideas, pioneering research, and practical applications in the field of geospatial information.

We invite submissions from all areas, including surveying, GIS, remote sensing, hydrographic surveying, geospatial analysis, and cartography.



**Upload your abstract [HERE](#) by Friday, 9 August!**

## North Queensland – Friday, 11 October

### Call for Presentations open

A Conference specifically designed with a North Queensland focus; this year the **North Queensland Geospatial Conference and Excellence Awards** will be at the Rydges Esplanade Cairns.

This event offers a dynamic platform to dive deep into the latest technologies, trends, and best practices shaping our industry.

Registrations will open soon.

**Submit your presentation [HERE](#)**







## Western Australia, 8 November

### Announcement!

We're excited to announce the date for the 2024 Western Australia Geospatial Conference and Excellence Awards. Join us on Friday 8 November at the incredible new and unique venue - The Maali at Perth Zoo.

### Save the date!

## ACT – Thursday, 21 November

### Submit your presentation [HERE](#)

The last of our regional conferences for 2024 is the **ACT Geospatial Conference & Excellence Awards**, which will be held at the Mercure Belconnen on Thursday 21 November.

Whether you're a GIS specialist or a remote sensing expert, this conference offers a unique chance to gain essential insights, build strategic partnerships, and discover new paths for growth and innovation. If you aim to enhance your skills, explore cutting-edge technologies, or connect with fellow professionals, our conference is your key to success in the rapidly changing field of geospatial technology.

### Make sure you save the date!

## Enhance Your Brand Presence

Get in front of the decision makers and make an impact at our Conferences. The Regional Conference Series provides an opportunity to enhance brand visibility across event marketing channels and access to this highly sought after face-to-face business networking space.



### Why take part?

- Position yourself as a market leader
- Benefit from brand exposure before, during, and after the event
- Networking opportunities
- Elevate your company's profile with a presentation in the conference program (Major Partners only)

For information on opportunities at any of our conferences please contact our National Partnerships Manager, **Claire Gerber**.

We look forward to welcoming you to the 2024 Geospatial Conference in your state!

For information on any of our events please contact the Events Team: [events@geospatialcouncil.org.au](mailto:events@geospatialcouncil.org.au)

## Remembering Syd Kirkby



It is with great sadness that we bid farewell to Sydney 'Syd' Kirkby, a highly regarded surveyor who made a significant contribution over many decades to both mapping and surveying within Australia and Antarctica. Syd passed away at age 91, at the Selangor Private Hospital, Nambour, Qld. He had been ill for some months.

Born in Perth in 1933, Syd grew up in Fremantle. At five, he developed polio and was severely disabled for years. His father, a meteorologist, quit his job to 'rebuild' him, using a gruelling exercise regime including swimming, and later, boxing. Syd hated the idea of being considered a 'cripple' and met the challenges well. Syd considered his teenage years idyllic; fishing and camping with his father and brother. During this time, family friend and surveyor Frank Goyder regaled young Syd with stories of exploration. In his last year at school, Kirkby swapped his arts curriculum to science, and then chose surveying as a career.

Syd qualified as a surveyor in 1955 and was appointed to the position of Surveyor at Mawson Station in 1956, at just 21 years old. He joined National Mapping's Melbourne office in August 1959 after wintering at Mawson base with an Australian National Antarctic Research Expedition in 1956-57. During the summer of 1956-57, Syd and his companions Bill Bewsher (1924-2012) and Peter Crohn (1925-2000) were the first ever people to see the full extent of the Prince Charles Mountains. These major mountains extend in an arc over 380kms in Mac Robertson Land well to the south of Mawson base, and were named in 1956 after HRH then Prince Charles, now King Charles III. Syd and his

two companions were the first people to penetrate the Prince Charles Mountains when they undertook their one-thousand-mile dog sledging journey that extended over a period of three months. Syd again wintered in Antarctica in 1960 and 1980 and participated in further Australian National Antarctic Research Expeditions during the summer seasons of 1961-62, 1962-63 and 1964-65.

Syd retired from National Mapping's then Dandenong office in October 1984 and eventually settled with his partner Jude at Flaxton on Queensland's Sunshine Coast hinterland. Over the years he received numerous awards and recognitions. For his service in Antarctica Syd was awarded the Polar Medal in March 1958 and he was made a Member of the Order of the British Empire in January 1966. In 1997, Syd was awarded the Gold Medal of the Australian Geographic Society and in 1999, Syd was nominated by The Australian newspaper as one of the ten greatest Australian adventurers of the 20th century. In June 2018, Syd was made an Officer of the Order of Australia for distinguished service to surveying, particularly in the Antarctic, to polar exploration, research and mapping expeditions, and to professional scientific societies. Several geographical features in Antarctica were named for Syd Kirkby by Australian and other Antarctic place names authorities, namely: Kirkby Glacier; Kirkby Head; Kirkby Shoal; and Mount Kirkby.

Syd's life was a remarkable testament to human endurance. Despite facing numerous challenges, he persevered and made a lasting impact on surveying and mapping across Australia and the Australian Antarctic Territory. Our thoughts are with his family and closest friends during this difficult time. He will be greatly missed.

## GCA Membership

Have you considered becoming a Member of GCA? By joining, you will become part of a community of forward-thinking professionals dedicated to raising awareness of the value of the geospatial sector for the benefit of all Australians. We have a variety of memberships on offer including free student memberships, discounted graduate memberships, and full professional memberships. To view a full list of our membership benefits, click [HERE](#).

### Winner of our Locate25 ticket draw

Last month, we ran a competition for all new members, giving them a chance to enter a draw to win a full ticket to Locate25 (worth \$1,500). We are pleased to announce that Neil Briton is our lucky winner! Congratulations, Neil!

### Organisational Members

A reminder for all our Organisational Members: please ensure you nominate one member for voting purposes at



the Annual AGM. Please contact our Memberships Officer with the details: [membership@geospatialcouncil.org.au](mailto:membership@geospatialcouncil.org.au)

## New edition of JOSS now online



The latest edition of the Journal of Spatial Science (JOSS) is now available to all GCA Members online via the Member Portal. GCA Members have complimentary access to the latest and all past editions of the Journal as part of GCA's Membership Benefits.

### How to access JOSS:

- Login to your Member Portal.
- Select 'Industry Publications' via your Member dashboard.
- Scroll down to JOSS where you will see an access url.
- This link will take you to the JOSS homepage. If you scroll down to the bottom, you will see pdfs of all the JOSS editions. You can click on them to either read online, or you have the option to download the full pdf.

Separately an open access agreement has been granted for authors in Australia and New Zealand! Authors affiliated with participating institutions are eligible to publish in JOSS at no cost!

To find out more, and to view the eligible institutions, click [HERE](#).



## BOSSI CPD Points

A reminder that CPD conditional compliance or exemption applications must be submitted to BOSSI by 31 July 2024. All registration renewals must be submitted and payment made by 31 August 2024. Failure to do so will result in removal from the register.





# WORKING WEEK 2025

AND

# Locate25 | G

THE NATIONAL GEOSPATIAL CONFERENCE

## FIG Working Week 2025 and Locate25

Save the  
Date

This year, Locate25 is being held as part of the FIG Working Week 2025, taking place at the Brisbane Convention & Exhibition Centre, from Sunday 6 – Thursday 10 April. Participating in FIG Working Week 2025 and Locate25, offers unparalleled access to the international surveying and geospatial community, providing a platform to exchange experiences and stay at the forefront of developments across various aspects of surveying and geospatial practices, including ethics, standards, and education.

The overall theme for the 2025 event is 'Collaboration, Innovation and Resilience: Championing a Digital Generation.' It will feature an insightful and technical programme with local and international practitioners, allied professionals and academics speaking on their field of expertise.

### What to expect:

- 1,200 – 1,800 international and national attendees
- 3-day conference
- Pre- and post-events
- 70+ sessions
- 80+ countries represented
- Dedicated networking opportunities
- Extensive exhibition

This combined event is a great opportunity for Australia's geospatial community to showcase their technical expertise, strong research capability and warm hospitality.

**The call for papers and registration will be opening shortly.**

Destination Partner

Queensland  
AUSTRALIA

Event Partner

brisbane  
australia

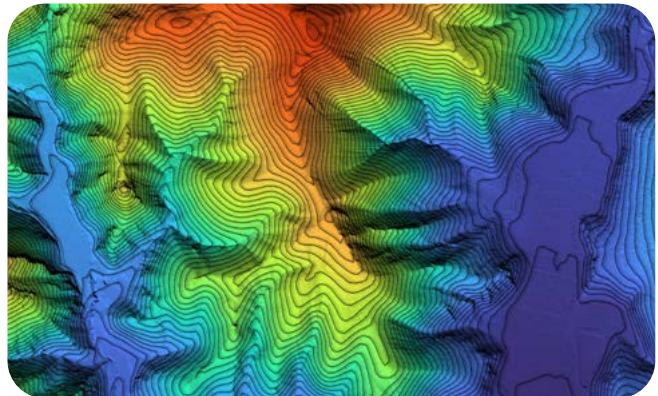
# HYDROGRAPHY

## IBSC Recognised S-5B Hydrographic Surveyor and S-8B Nautical Cartographer Program 2024 Enrolments

IIC Academy is pleased to announce that enrolments are now open for the 2024-25 deliveries of the IBSC Recognised S-5B Hydrographic Surveyor and S-8B Marine Geospatial Programs. The S-5B Hydrographic Surveyors Program will commence in September 2024. This course comprises 13-weeks of online self-paced and instructor-led Theory that can be completed over a 23-week period, followed by a 9-week Practical in Australia commencing May 2025. It is intended that the Australasian Practical will be held in the Gold Coast; we also anticipate Practical deliveries in both Canada and Europe if student numbers allow. The delivery of this Program is designed to allow maximum flexibility for students and employers, reduced costs and minimum time away from your home or workplace.

The S-8B Nautical Cartographers Program will be delivered as a 22-week Global Delivery commencing September 2024. This Programme provides students with the necessary theoretical and practical knowledge and skills required to undertake Nautical Chart production.

If you are interested in attending or wish to obtain more information on either of these Programs please get in touch at [takhou.law@iictechnologies.com](mailto:takhou.law@iictechnologies.com) or [hydrographicsurveyor@iicacademy.com](mailto:hydrographicsurveyor@iicacademy.com).



Further details on the Programs can also be found [HERE](#).

# SURVEYING

## CFMEU developments

GCA is aware of the recent developments concerning the CFMEU, and the appointment of an independent administrator for the Victorian branch following allegations of corruption. We are closely monitoring the situation to ensure we remain informed and responsive to any potential impacts on our members. If you have concerns or wish to bring any issues to our attention regarding this matter, please contact us at [ceo@geospatialcouncil.org.au](mailto:ceo@geospatialcouncil.org.au). We will actively support all members to progress concerns to the appropriate authority, and will inform the Institution of Surveyors Victoria, accordingly.

Surveyors and geospatial service providers are entitled to conduct their business safely in an open and fair marketplace, and we will work tirelessly to support this principle. It is important to note that surveyors are covered by the [Surveying Award 2020](#) under the [Fair Work Act 2009](#). Clause 27A (Surveyors Award) allows for



workplace delegates, and Division 4 (Fair Work Act 2009) addresses Industry Associations/ Unions, including Misrepresentation and Coercion. The guiding principles set out in the Fair Work Act and the Surveyors Award allow for an individual approach

to both the relationship between the employee and the employer, with the employer then having a relationship between themselves and their client.

The surveying and geospatial professions have strong professional standards. GCA will continue to advocate for the recognition and implementation of these standards and for our national [Engineering Surveying Professional – Australasia Pacific \(ESP-AP\) Certification](#) on construction sites across Victoria and Australia. At GCA, we are committed to ensuring that surveyors are treated fairly and can operate in a professional environment that upholds their expertise and contributions. If you would like to discuss this matter further, please do not hesitate to get in touch with us.



## National Engineering Surveying Certification (ESP-AP)

With the CFMEU currently under investigation following allegations of illegal and bullying behaviour, many will have experienced first-hand, or heard rumours of, surveyors being prevented from doing their jobs or being pressured into complying with demands from unions that don't even represent them, before being allowed to do their work. We believe there has never been a more pressing need for Engineering Surveyors to get Certified. As more and more surveying will be required to cater for the large growth in infrastructure projects, we need to ensure the surveying



profession remains one that is not just thought of as a 'trade'. Certification is a great way to ensure technical skills and experience, ongoing professional knowledge, development and growth is recognised at an individual level.

Our national Engineering Surveying Certification is open to all persons irrespective of membership status with GCA. Specialist Certification in Engineering Surveying officially recognises a person has the necessary technical knowledge and experience to competently perform engineering surveys and associated activities. It benefits an employee by providing recognition and career opportunities, and an employer who can easily identify accredited and qualified individuals, mitigating the risk of substandard work and project delays, increasing their credibility to customers.

If you would like to report a concern about the CFMEU, click [HERE](#).

The ESP-AP audits are currently being completed. New digital badges will be sent out once the process is completed (in the next couple of weeks), and the updated ESP-AP Register will be available on the GCA website. A reminder that non-members need to pay their renewal fee for ESP-AP Certification for the 24/25 financial year via the website shop.

To find out more, or to prepare your submission, click [HERE](#).



## GCA signs MOU with UK-based Chartered Institution of Civil Engineering Surveyors (CICES)

GCA and the Chartered Institution of Civil Engineering Surveyors (CICES) have joined forces in a new Memorandum of Understanding (MoU) aimed at enhancing geospatial standards and promoting professional excellence across continents.

At the core of this partnership is a commitment to harmonise certification standards for engineering surveyors, facilitating mutual recognition between the UK and Australia. This collaboration also seeks to promote global best practices in competency standards, ensuring members of both organisations benefit from shared knowledge and experiences. Key aspects of the MoU include identifying and sharing best practices, capturing collective value through standardisation, and supporting joint participation in relevant events. Both organisations will also collaborate on strategic projects and initiatives that add value to their respective memberships, promoting greater awareness of the engineering surveying profession, and fostering professional development opportunities.

*"We are excited to partner with CICES in this strategic endeavour to elevate geospatial standards globally," says Tony Wheeler, CEO of GCA. "This collaboration underscores our commitment to fostering innovation, sharing knowledge, and promoting excellence within the industry."*

**Tony Wheeler, CEO of GCA**

*"This MoU with GCA represents a genuinely significant moment for our organisations. By aligning our efforts, we can better serve our respective memberships and contribute to advancing geospatial standards worldwide."*

**Simon Hamlyn, CEO of CICES**

# Business News

## More homes for South Australians: Housing Roadmap



The Government of South Australia has published its Housing Roadmap, as The Department for Housing and Urban Development works towards building more homes for South Australians. The Report demonstrates the importance

of Geospatial Information in delivering more homes for South Australians, and is full of various references to maps and spatially derived data. Of note, is the reference to the Regional Planning Portal and Land Supply Dashboard on page 29.

### Regional Planning Portal:

South Australia is considered to have the best ePlanning platform in the country. This innovation has now been extended to include another Australian first – a fully digitised Planning Portal. The portal was launched in

March 2024 with the draft Kangaroo Island Regional Plan. The State Planning Commission, supported by Planning and Land Use Services, is currently preparing six new country regional plans and the Greater Adelaide Regional Plan (GARP). These regional plans spatially map the South Australian Government's long-term vision for growth across the state's planning regions. Regional plans play a significant role in identifying land and long-term infrastructure needs to support sustainable growth within the regions. It will highlight how these important changes can be accommodated over a 15 to 30-year period.

### Land Supply Dashboard:

The recently launched Land Supply Dashboard is an important tool to help keep developers, councils, state agencies and all South Australians up to date on land supply and development activity in the state. The dashboard makes urban land supply and development activity data more timely, accessible, transparent and interactive through an online platform. The interactive tool also displays current information on the location of infrastructure such as water, sewer, and electricity.

You can read the Housing Roadmap Report [HERE](#).





## Aptella partners with Sphere Drones to enable autonomous scanning and mapping operations for customers with HubX

Aptella has signed an agreement with Sphere Drones' to distribute its HubX mobile payload platform for autonomous scanning and mapping operations. The target markets include the resources, mining, construction and emergency services sectors.

"Our team is focused on sourcing and deploying best-in-breed innovation from around the world for our customers," says Martin Nix, Aptella CEO. "It is an honour to partner with an Australian-based development team and collaborate with Sphere Drones to bring this unique, full-service HubX solution to our customers."

HubX is described as a mobile solution designed for Drone-in-a-Box (DiaB) operations, suitable for hard-to-access locations. It's configurable payload bay enables the user to mix and match payloads. When coupled with DJI's Dock 2, HubX is said to simplify DiaB operations, enabling pilots to be flying within 30 minutes from arriving on site.

To obviate the complex and time-consuming process of gaining remote operations centre (ReOC) certification, HubX offers a managed service offering, enabling customers to deploy the platform immediately.

Find out more [HERE](#).

## SSSDLN 'Inclusion @ Work Index'

The Space, Spatial & Surveying Diversity Leadership Network (SSSDLN) has just announced it will be running its "Inclusion @ Work Index" industry survey again in 2024. This survey is a pivotal step in their mission to promote Diversity and Inclusion across our sectors.

Building on the comprehensive report SSSDLN and the Diversity Council Australia Ltd produced in 2021, the 2024 survey will provide critical insights into the state of D&I in the industry. It will be able to gauge progress over the past three years, compare the industry to other STEM fields, and identify areas for further improvement.

GCA is proud to be a partner of this initiative, along with the Australian Space Diversity Alliance, Institution of Surveyors NSW (ISNSW), Land Solution Australia Pty Ltd, Spatial Vision,

*"We are thrilled and excited to announce our partnership with Aptella. We look forward to delivering HubX to untapped key verticals, including civil construction, and expanding our presence in the global market."*

Paris Cockinos, Sphere Drones CEO



Locus, Aptella, and 1Spatial. SSSDLN is still seeking a few more partners and sponsors. Please contact them if you would like to be involved.

## Space, Spatial & Surveying





design...engineer. construct!

# Design a Rail Station Hub and Route – Win a VIP trip to London

**GCA is proud to be a partner of the Class of Your Own (COYO), 'Design...Engineer...Construct! (DEC) Challenge for 2024, and we are calling on industry to get involved! Although this challenge is aimed at secondary school students from the ages 11 – 16, industry plays a big role in helping to make this challenge a success.**

We are now in the final couple of days of the Challenge, with exciting news that the prize has been announced! This year's winner will receive a trip to London for the winning team and two teachers.

## **About the challenge:**

Schools from Australia, China, Dubai, India, Lithuania, Scotland, and England have already registered for the COYO CHALLENGE 2024! This global challenge is an incredible opportunity for students to tackle real-world problems and gain valuable project-based learning experience by designing a net-zero rail station hub and route. Although this is a global challenge, we are keen to get as many schools in Australia on board as possible.

## **How industry can get involved:**

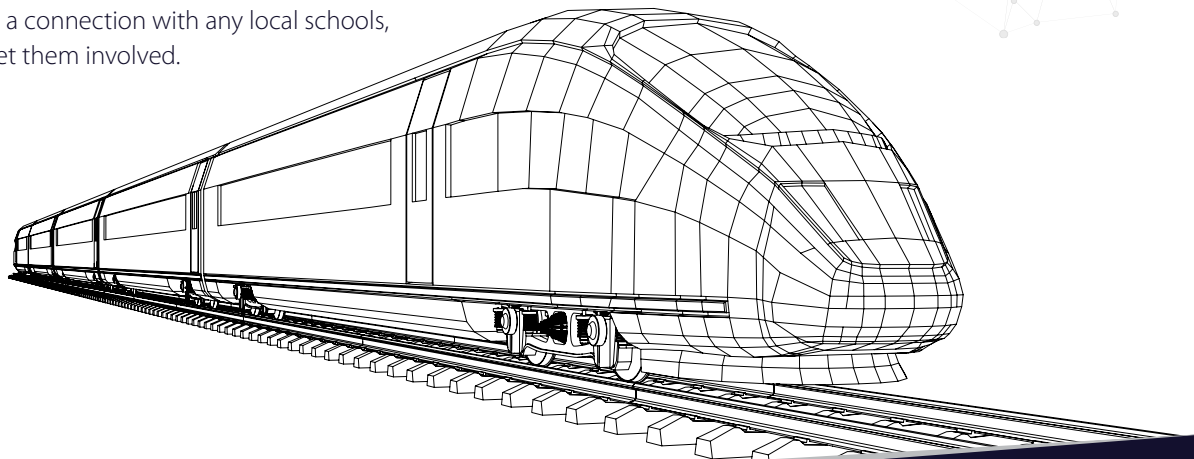
If you want to get your local school on the right track, please sign up as a volunteer so that we can connect you. It's a great way to support STEM, social value, and CPD activities. Whether you can host webinars, create informative videos, or virtually/physically visit schools, your expertise is needed. Your help will be invaluable to the students, as they move at high-speed to reach their destination - to win! Additionally, if you have a connection with any local schools, we encourage you to get them involved.

## **How schools can get involved:**

Only one team per school may enter. Schools need to register their interest here. Schools have until Wednesday, 31st July to submit their entry. Please spread the word in your local community!

To view the challenge brief, click [HERE](#).

We do hope you will consider getting involved. This is a fantastic opportunity for students to solve real world problems and gain real world project-based learning experience.



# Industry Events



## The Surveyors Trust Webinar

**Theme: The Value of Survey Plan Royalties**  
**Date: 14 August**

Register [HERE](#)



## GeoRabble – Save the date!

**Date: 15 August**  
**Venue: Original Coopers  
Alehouse (Adelaide)**

Find out more [HERE](#)

## FOSS4G SotM Oceania 2024

Register [HERE](#)

**When: 5-8 November**  
**Where: Hobart**





FIG2025 / Locate25

SAVE THE DATE!

When: 6-10 April 2025

Where: Brisbane

Venue: Brisbane Convention & Exhibition Centre



## Geospatial Council of Australia Upcoming Events

### Webinar: Discover the Undiscovered



Date: 1 August

Time: 11:00am – 12:00pm (AEST)

Venue: Free for GCA Members/  
\$55 for Non-Members(AEST)

Register [HERE](#)

### 2024 VIC Geospatial Conference

This event is proudly supported by:

**MAJOR PARTNERS:**

C.R.Kennedy | GEOSPATIAL SOLUTIONS | vicmap | 50 years | HEXAGON

1spatial | sphere drones

**CONFERENCE EXHIBITORS:** UPG | The Spatial Distillery Co.

**EVENT SUPPORTER:** MapGear

Date: 9 August

Time: 8:30am – 6:00pm

Venue: Melbourne Convention  
& Exhibition Centre

Register [HERE](#)





## 2024 VIC Geospatial Excellence Awards Dinner



**Date:** 9 August  
**Time:** 6:30pm  
**Venue:** River's Edge Events

Register [HERE](#)

## SA YEP Breakfast Social



**Date:** 13 August  
**Time:** 7:00am – 8:30am  
**Venue:** Sazon Grenfel

Register [HERE](#)

## Spatial Information Day



**Date:** 16 August  
**Time:** 9:00am – 5:00pm  
**Venue:** Adelaide Convention Centre

Register [HERE](#)

## Geospatial Office Visit: Transport NSW TECCH

**Date:** 27 August  
**Time:** 2:00pm – 4:00pm  
**Venue:** Transport for NSW



Register [HERE](#)

## Webinar: Life After University: navigating the post-study landscape

**Date:** 27 August  
**Time:** 1:00pm – 2:00pm AEST  
**Venue:** Free for GCA Members/  
\$55 for Non-Members

Register [HERE](#)

## NSW Geospatial Excellence Awards



**Date:** 30 August  
**Time:** 6:30pm – 10:30pm  
**Venue:** L'Aqua

Register [HERE](#)

# MEET THE MEMBERS



## Dr Zaffar Sadiq Mohamed-Ghouse

**Director – Advisory & Innovations, Woolpert; and Honorary Fellow at GCA**

### How and why did you join the GCA?

I joined SSSI as a student member in 2005, whilst doing my first year PhD Candidature at the University of Melbourne.

### Where did your interest in surveying/ geospatial technologies come from?

I am a second-generation geospatial professional. My father, Dr. Shaik Mohamed Ghouse, worked as a Chief Engineer in the Agriculture Engineering Department of Tamil Nadu State, India, using remote sensing technology. He was part of the first batch of M.Tech Remote Sensing graduates at Anna University, Chennai, which was established as the first school of Survey by the British in 1794. I completed my MS by Research at the same university in both Remote Sensing and GIS, and worked there as a Senior Project Fellow from 1998 to 2004.

### What role do surveying/ geospatial technologies play in your working life?

Surveying and geospatial and technology is implicit to me as I provide advocacy and advisory services for these technologies to my clients, which include state and national governments.

What are the key benefits that you believe geospatial technologies bring to Australian business and society?

Safety, productivity, cost savings, and location information are what geospatial technologies bring to Australian business and society. These technologies ensure the safety of construction and mining workers, monitor dam safety, develop highways or new metro lines via tunnels, and navigate ships carrying Australian produce for export. Whether it's a fishing trip, planning a family holiday locally or overseas, finding the optimal way to reach your office, or protecting Australia's unique species and managing valuable groundwater ecosystems, geospatial technologies play a critical role. Surveying, geodesy, cartography, hydrography, geospatial, and remote sensing disciplines help manage resources better on land, at sea, and in space.

### How does the GCA help its members to innovate and succeed?

GCA provides continuous professional development for its members through webinars, and face-to-face state and national events. GCA offers a Body of Knowledge through which individuals can get certified to practice their profession. GCA advocates for the profession within the broader professional community and provides a platform for businesses to discuss and adopt emerging technologies. It serves as a gateway for both the government to discuss state and national geospatial initiatives, and also for international geospatial societies to exchange ideas on continuous professional development and promote ethical practices. GCA offers opportunities to develop the next generation of leaders through a mentoring program, and acts as a trusted entity for academia and research institutions to find collaboration opportunities with the private sector.

### What does the future of geospatial hold?

The future lies in a Geospatial Ecosystem that integrates and evolves digital transformation with core disciplines such as surveying, geodesy, cartography, hydrography, geospatial, and remote sensing. This ecosystem will minimise the digital divide and support effective collaboration between nations, states, and continents at its peak. The Geospatial Ecosystem will serve as a body of knowledge that benefits global citizens.





**What are some notable awards or significant milestones in your career related to geospatial technologies?**

I was recognised as Professional of the Year in 2022 at the Geospatial Excellence Oceania Awards during Locate 2022, and as Young Professional of the Year at the Victoria Spatial Excellence Awards in 2011. In 2021, I received the University of Melbourne's Thornton Smith Medal for my outstanding service to the surveying and geospatial profession. The International Society for Digital Earth awarded me the Conference Organisation Award for organizing the 2017 ISDE Symposium alongside Locate 17 in Sydney. GCA has conferred upon me the titles of Honorary Fellow and

Fellow for my service to SSSI. I was awarded a Doctoral Full Scholarship with the Cooperative Research Centre for Spatial Information and have received best paper awards at several national and international conferences.

**What do you do outside of your work in the industry (family, hobbies, interests, sports, pets etc)**

Due to my extensive national and international travel, I spend my time with my family when in Melbourne, play ping pong with my children and wife. I play chess with passion. I also love visiting Museums whenever I find time during my travel. I like learning about cultures and languages.



The Geospatial Council of Australia is very keen to gather feedback on GeoMessage and the value it delivers to our Members. Please let us know what you would like to see in our next edition by emailing any feedback or comments to [comms@geospatialcouncil.org.au](mailto:comms@geospatialcouncil.org.au)